



Dryer Performance Review

Overview

With the advances in seed corn breeding, new varieties have become more prolific and are emerging into the marketplace at an ever increasing quicker rate. The new varieties have changed, and will continue to change, the physiology of the seeds and consequently, the drying characteristics of the seed as well.

Seed with increased sensitivity, diverse intrinsic seed dry rates, changing physical tolerances and other factors have made the seed production process and in particular the seed drying process and ever increasing challenge to manage.

Seed technology is changing... is your drying technology keeping pace? Does your seed dryer have the capability to deliver the drying performance needed for the seed varieties you are producing today?

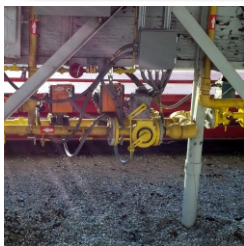
Jacobsen Holz Corporation has over 30 years of experience with seed dryer management, and performance. JHC can help YOU better understand your dryer and it's capabilities and the seed corn drying process in general. Let JHC put our knowledge and experience to work for your seed drying operation.



Dryer Performance:

At what "level" is your dryer currently "performing" and what is it capable of doing?

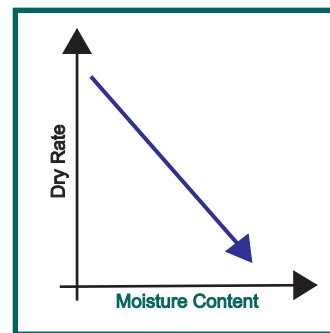
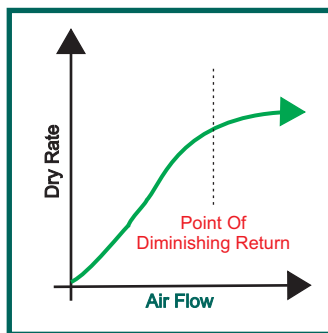
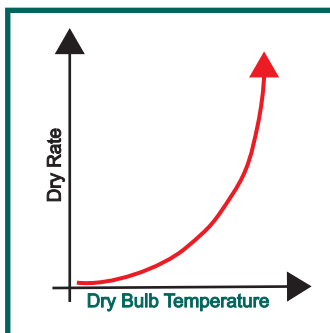
Is your dryer operating at full capacity? Frequently, modest changes and improvements to the dryer Fan-Burner Systems can be made that result in significant improvements in dryer throughput and overall performance. These are questions that JHC can help you answer with a knowledgeable review of the dryer design and the operation of the dryer through historic drying data.



Dryer Efficiency:

Is your dryer management strategy achieving the desired dryer performance at optimum efficiency?

Seed dry rate is a "formula" defined by several variables. Ambient air characteristics, added heat, airflow and seed physiology are all major factors in determining the dry rate of the seed. Understanding how these variables interact to determine dry rates is essential information to optimize the utilization of gas, electricity, and dryer capacity. JHC can quantify this information for your specific drying operation.



Dryer Performance Review Task List:

The specific agenda of a JHC Dryer Performance Review will vary based on the type and configuration of the dryer, availability of historical drying information and other pertinent dryer and dryer management information.

A generalized list of tasks performed during the review is outlined as follows:

- Determine Operating Parameters – Airflow, Pressures & Temperatures
- Determine Fan And Burner Capabilities – Fan CFM, Burner BTU/hr.
- Review Of Historical Drying Records
- Analysis Of Compiled Dryer and Dryer Management Information
- Report Of Options To Improve Drying Capacity
- Recommendations To Improve Dryer Performance & Efficiency Of Drying



Dryer Performance Upgrades:

JHC offers dryer upgrade systems and services to increase and to optimize the performance of your dryer. Frequently fan and burner outputs can be increased without replacing major components to increase the capability and value of your current dryer.

A partial listing of systems and services offered for enhancing dryer performance are outlined as follows:

- Increased Airflow Via Fan Systems Optimization
- Increased Btu/hr. Via Burner Systems Optimization
- Automatic Tunnel Pressure Management For Double Pass Dryers
- Burner Staging Upgrades
- Fan And Gas Train Replacement / Upgrades
- Fan Burner Systems Maintenance Services

Dryer Information:

To get started, we need information about your dryer. Please download the [Dryer Information Worksheet](#) available on the JHC website. Then follow the directions on the form to send it to JHC for review. A JHC engineer will contact you to discuss your dryer and drying objectives.

If you prefer, contact JHC at (515) 465-3567 and ask for JHC Dryer Engineering Services to discuss a Dryer Performance Review.

JHC specializes in seed dryer management systems, controls and renovation. We offer a comprehensive range of dryer products and services and can assist you with all your dryer maintenance and upgrade needs. JHC has provided innovative products and services to the seed production and research industries for over 30 years.

Visit our website, or call our office at (515) 465-3567 for additional information regarding other products and services available from the **Jacobsen Holz Corporation** (www.jacobsenholz.com).

SM000-0315-24

